



# Superlink Travels

## 06 Day Pilgrimage to

# Holy Land



## in Comfort

including :  
a Cable-Car Ride from  
Jericho to  
Mt. of Temptation



## Visiting Places

- Church of the Annunciation
- Garden of Gethsemane
- Mount of Beatitudes
- Church of Multiplication
- Baptism
- Boat Ride in the Sea of Galilee
- Church of Agony
- Calvary - Tomb of Jesus
- Jericho / Sycamore tree
- Nazareth
- Church of the Ascension
- Last Supper Room
- Bethlehem
- Church of Nativity
- Church of Holy Sepulcher
- Way of the Cross
- Cana
- Western Wall
- also including a visit to Milk Grotto

## Departure Dates in 2021

06 Jun

07 Nov



**Rs. 220,000/-\***

per person on twin sharing basis

### Price includes

- Meals\*\*
- Tips
- Air Tickets

\*\* As per the Itinerary \* Conditions Apply

**BOOK TODAY!**  
**Tomorrow may be too late !!**

**Accommodation in  
Star Class Hotel**

For inquiries and bookings please contact:

**Superlink Travels (Pvt) Ltd.**

'Lucky Plaza' 70, Kollupitiya Lane (St. Anthony's Mawatha) Colombo 03

T : +94 11 257 5698 | 257 6553 | 257 5900

E : superlink@superlink.eureka.lk | W : www.superlinktravels.com

**WE DON'T PROMISE MEMORIES. WE MAKE THEM**



Find us on Facebook

www.facebook.com/superlinktravels





# Itinerary for Special 06 Day Pilgrimage to the **HOLY LAND**

**At an affordable Price for all Pilgrims  
including a Cable Car ride to Mt. of Temptation and many more...**

## Itinerary

### DAY 01

Group report at the Bandaranaike International Airport Group met by the Superlink Representative at the Departure Lounge Depart to **Jordan**, Arrive in Jordan (*Amman is the Capital of Jordan, known in Biblical times as Rabbath / Amman*)

Thereafter depart to **Israel** via Border Crossing  
Transfer to the hotel for **dinner** and overnight stay in Israel



### DAY 02

Breakfast at the hotel

Visit **Nazareth** and visit the **Church of Annunciation** (*where Angel Gabriel appeared to our Lady*) Morning tour of **Tiberias** and then take a **boat ride** across the **Sea of Galilee** (*as taken by Jesus and his disciples*) Visit the **Church of Multiplication** (*the place where Jesus blessed the fishes and the loaves*) and the **Mount of Beatitudes** (*Venue of Jesus' Sermon on the Mount*) Thereafter visit the **Church of Primacy. Lunch Included**

Afternoon, visit **Cana** (*first miracle of water into wine*)  
Transfer to hotel for **dinner** and overnight stay



### DAY 03

Breakfast at the hotel

Morning visit the **Western Wall** (*the Wailing Wall which is the most sacred place for the Jewish people*), visit the **Pater Noster** (*Church of the Lord's Prayer*) visit the place where **Jesus Christ ascended to heaven** and you could see his footprints on the rock The **Basilica of the Agony** in the **Garden of Gethsemane** (*where Jesus spent the night before his betrayal*) Visit **Mount Zion** and the Room of the **Last Supper** then visit the **Church of the Dormition** (*where the statue of Virgin Mary lies in the peaceful slumber of death*)

**Lunch not Included**

Tour of **Bethlehem** and visit the **Church of the Nativity** (*birthplace of Jesus Christ*) and **Church of St Catherine** (*The Catholic Church in the Church of the Nativity where Christmas Midnight Mass is celebrated*) also visit the **Milk Grotto** And visit the **Shepherd's field**

Return to hotel for **dinner** and overnight stay



**DAY 04**

Breakfast at hotel

Morning Walk along the **Via Dolorosa (Way of the Cross)** with stops at every station then visit the Church of the **Holy Sepulcher (Tomb of Jesus and the Rolling Stone)** / **Calvary (Place where Jesus Christ was crucified)**

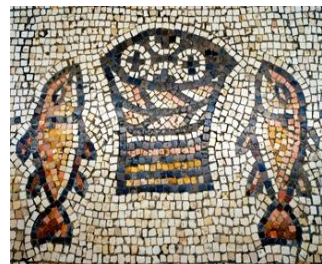
Visit the **Jordan River (the very place where Jesus was baptized)** and view the precise and authentic place where Joshua crossed to the Promised Land

**Lunch Included**

In the evening visit the **Dead Sea (Lowest place in the world/ Saltiest Sea... So dense you do not sink but float on the surface)**

Visit **Jericho** and view the **Sycamore Tree** and take the **Cable Car** to view the **Mount of Temptation (the site where Jesus spent forty days and forty nights fasting and meditating during the temptation of Satan)** rising to a height of 350 meters above from the sea level and commanding a magnificent and panoramic view of the Jordan Valley

Transfer to hotel for **dinner** and overnight stay

**DAY 05**

Breakfast at hotel

Visit **Ein Karem** and see the **Birth Place** and **Church of St John the Baptist**

Thereafter depart to Jordan for departure flight to Colombo

**DAY 06**

Arrive in Colombo



Pilgrimage Ends

The sequences of visits are subject to change.



## **06 DAY PILGRIMAGE TO HOLY LAND**

### **ITINERARY**

: A detailed itinerary is enclosed herewith

### **PRICE OF PILGRIMAGE**

: **TWIN SHARING**  
Rs 220,000/-\* per person  
**SINGLE ROOM**  
Rs 280,000/-\* per person  
**TRIPLE ROOM**  
Rs 220,000/-\* per person  
**CHILD BETWEEN 2 – 12 YRS**  
Rs 220,000/-\* per Child  
**INFANT (0 – BELOW 2 YEARS)**  
Rs 45,000/-\* per infant  
\*The above rates are subject to change

### **PILGRIMAGE PRICE INCLUDES IN HOLY LAND**

- Economy Class Return Air Fare
- 3 Star Hotel Accommodation in Holy Land
- Meals in Holy Land as mentioned in the itinerary
- Tips for the entire pilgrimage(*Guides, Drivers, Hotel Staff & Airport Representative*)
- Arrival/Departure/Transfers and Sightseeing in Holy Land and in Jordan by Deluxe A/C Coach
- Award winning English speaking guide throughout the pilgrimage
- Professionally trained Superlink Representative will accompany the Group
- Airport taxes in Sri Lanka and Fuel Surcharge on Air Ticket

### **PILGRIMAGE PRICE EXCLUDES IN HOLY LAND**

- Transportation to/from Colombo Airport
- Meals not mentioned in the Itinerary
- Visa fees for the Sri Lankan Passport holders for Jordan and Israel Group Visa and Israel and Jordan border taxes – Rs.24,500/-
- Please note generally in case of any illness or accident, 2 weeks hospital stay in overseas countries and repatriation by air generally cost approximately over US\$ 75,000/-  
It is compulsory to purchase the Travel Insurance covering health & baggage from Superlink Travels for Sri Lankan Passport Holders living in Sri Lanka
  - Up to 64 years - LKR6,000/-
  - Between 65 to 74 years - LKR 8,500/-
  - Between 75 to 85 years - LKR 13,500/-
- A) Please note that the Travel Insurance does not cover any pre-existing illnesses.
- B) Please note that USD100 will be a deductible amount from your claim.
- Foreign Passport Holders should obtain their Visa to Sri Lanka/ Travel Insurance(*which covers the entire journey including the Pilgrimage / Tour*) from their country of residence.
- All Foreign Passport Holders & Sri Lankan Passport Holders living abroad must purchase their own insurance from their home country of residence. To cover the entire Pilgrimage / Tour including Trip cancellation.
- Foreign Passport Holders has to pay Rs. 24,500/- per person to the Superlink Travels as their Visa fee for Jordan departure border tax for Jordan and Israel. (*For the Foreign Passport Holders travelling from/ via Colombo along with the group*)
- Foreign Passport Holders those who arriving directly in Amman, have to pay for their Individual Visas on arrival approximately US \$ 60 per person and Rs.13,500/- per person to the Superlink Travels as their departure border tax for Jordan and Israel.
- Sri Lankan passport holders applying for Israel visa from their country of residence – Visa for Israel is not included
- Any Meals during transit at the Airports
- Excess baggage charges
- Beverages during the Meals
- Laundry
- Expenses of a personal nature









**Pilgrimage / Tour Conditions****Departure:****Superlink Travels - Conditions for****1. IMPORTANT NOTICE**

Please carefully read the following conditions before you complete the Booking Form as these are the basis for acceptance of all bookings.

**2. TRAVEL INSURANCE**

Superlink Travels (Pvt) Ltd recommends Travel Insurance of USD 75,000 per person that safeguards against: baggage loss; medical expenses; theft and other contingencies. Superlink Travels (Pvt) Ltd makes no representations or guarantees concerning reimbursements of funds paid by you under any insurance claim. You agree not to hold Superlink Travels (Pvt) Ltd responsible for any decision made by insurers, and/or by any suppliers, or requirements of any foreign country, government authority or overseas laws and policies. Sri Lankan passport holders living out of Sri Lanka 6 months from the date of booking should obtain their own travel insurance from the country of overseas residence covering the entire pilgrimage/tour. Foreign Passport holders could obtain Travel Insurance from their country of residence covering the entire pilgrimage/tour. Furthermore, travel insurance does not cover pre-existing illnesses and it is the passenger's sole responsibility to obtain a special travel insurance covering their pre-existing illnesses. All passengers traveling on Pilgrimage/Tour should have sufficient funds for any Hospitalizations or any medical treatments.

**3. NEW BOOKINGS:** All new bookings must be accompanied by

\* Completed and signed Booking Form and the Tour Conditions

\* Photocopy of current passport (details page only)

\* Bookings must be made by full payments or required deposits by Superlink Travels (Pvt) Ltd. as per the Itinerary.

In the event you are confirming your booking as an individual /group/ family or any other accompanied person(s) and if you/one member cancels the tour/ pilgrimage please note that their deposit cannot be transferred to any other person or substituted and the payment is nonrefundable under any circumstance including medical grounds as per the cancellation policy 3A.

**3A Cancellation Fees**

Between date of booking to 120 days before departure date: Rs.100,000.

Between 119 days to 90 days before departure date: Rs. 150,000.

Within 89 days before departure date: NO REFUND.

**4. ADDITIONAL TRAVEL ARRANGEMENTS**

Superlink Travels (Pvt) Ltd can arrange additional flights, tours, and accommodation etc. for pilgrims / tour participants wishing to extend their pilgrimage / tour. Superlink consultants can arrange your complete itinerary and advise additional costs. All booking terms and conditions of the Tour Operator being used may vary from Superlink's conditions and must be adhered to Pilgrims/Tour participants who have booked to return at a later date than the group.

**5. PAYMENTS**

To be paid at the time of booking.

**Booking period: on promotional travel dates as mentioned only**

Valid on given travel, pilgrimage, holiday packages as mentioned and on mentioned dates as per our brochure / advertisement. Please visit our website [www.superlinktravels.com](http://www.superlinktravels.com) Promotional prices displayed, said, mentioned in the promotion above are applicable to all ages. Price includes, including taxes, fees, airport taxes, once booked and confirmed and paid the deposits or full payments in form of cash, credit card, cheque, Bank transfers/remittance are non-transferable non-refundable as per cancellation policy 3A and date changes are not possible. In the event you are confirming your booking as an individual/ group /family accompanied person(s) and if you /one member cancels the tour/ pilgrimage please note that their deposit(s) cannot be transferred to any other person substituted under any circumstance including on medical grounds or for any reason(s). Bookings can be done only at Superlink Travels (Pvt) Ltd. Sales office for Sri Lankan passport holders, All Foreign passport holders making bookings are accepted only along with the tour condition. It is compulsory that you should forward the tour conditions along with the payment.

**Final Payment:** (If any) No later than 16 weeks prior to departure date. If not for any delayed payments Superlink Travels (Pvt) Ltd will be compelled to debit you with additional 0.1% per day (maximum for 07days) thereafter if Superlink Travels (Pvt) Ltd does not receive the balance amount within this period it will be presumed as you have cancelled your trip and deposit is non refundable as per the tour conditions.

**6. ROOM TYPES**

Prices are based on a twin / triple shared room. An individual pilgrim/tour participant request to share is accepted at the time of booking and he/she will be accommodated in a twin / triple room. Pilgrim / tour participant electing to twin / triple share with an unknown partner of the same gender do so in the full knowledge that Superlink cannot guarantee the compatibility or medical fitness of your roommate. A single supplement surcharge will apply if Superlink is unable to provide a roommate. Specific requests (Single / Double / Triple) must be made at time of booking and supply cannot be guaranteed. Single supplement surcharge applies for single room requests. Requests for triple room will be for a twin-bedded room with extra roll-away bed. Certain pilgrims with a serious or ongoing medical condition or mobility constraint (Subject to approval) must bring an accompanying companion / career. Smokers (requesting to share with an unknown partner) may be required to pay a single room supplement if a suitable partner is not found. In the event the passenger refuses to pay the single supplement the booked pilgrimage/tour will be deemed cancelled as per clause no. 05

**7. AIRLINES**

The scheduled flights used for all group departures are subject to the usual conditions of the carrying airline and relevant to international law. We therefore accept no responsibility for alterations to air schedules or scheduling. During transits Superlink or the airline will not provide any food or beverages at the airports.

**\* Pilgrims/ Tour Participants from Overseas**

Pilgrims / Tour participants from overseas should arrive at least 24 hours prior to departure of tour in Sri Lanka to avoid miss-connecting flights due to delayed arrival and due to any rescheduling / early departure of flights. And on your return too after completion of the trip, your departure from Sri Lanka to your destination should be after 24 hours (This will avoid missing your onward flights to your destination due to late arrivals of flight/flight schedule).

**8. HEALTH**

Any medical condition, disability or mobility difficulty that may affect the functioning of the group must be advised on the booking form. Any pilgrim / tour participant with a pre-existing medical condition or illness must declare the nature of such condition at the time of booking and make arrangements for the provision of any drugs or other cause of treatment that may be required during the tour. Any relevant health or mobility conditions not adequately disclosed may result in your immediate and direct return to your point of departure at your expense and without availability of refund. This clause is necessary to assure the health and safety of all group members and in particular those with whom you may be sharing a room. We recommend you consult your doctor in respect of your intended travel as this may also have some bearing on your application for travel insurance. Furthermore, your doctor or the relevant Government Health authorities could advise further on any vaccination requirements necessary. Certain pilgrims/tour participants with a serious or ongoing medical condition or mobility constraint (Subject to approval) must bring an accompanying companion / career. (Refer SECTION 9- MINIMUM MOBILITY REQUIREMENTS) all requests for health / medical clearance submitted by pilgrims/tour participants are at the sole discretion of the operating carrier / tour operator. Superlink cannot be held responsible for the outcome of these decisions.

**9. MINIMUM MOBILITY REQUIREMENTS**

Many of the sites visited on our pilgrimages / tours require a reasonable amount of walking. Superlink must be advised, at the time of booking, of any physical or health condition that may affect your mobility. Superlink will make reasonable attempts to accommodate any special needs but is not responsible for any denial of services by carriers, hotels, restaurants or any independent suppliers. Most transportation services, including touring coaches are not equipped with wheelchair ramps. Superlink regrets that it cannot provide individual assistance to a pilgrim for walking, dining, getting on or off coaches or other personal needs. A qualified and physically able companion / career must accompany travelers who need such assistance and must assume responsibility of their wellbeing.

**10. PASSPORT - VISA**

Each Pilgrim / Tour Participant is personally responsible for ensuring they possess valid travel documentation. New passport applications must be personally applied for disfigured / torn passports. Passport(s) are not accepted, in the event you have a disfigured / torn passport we suggest you to obtain a new Passport. In the event you travel on a disfigured / torn or otherwise unacceptable Passport Superlink Travels (Pvt) Ltd will not be responsible for any issues at the Immigration, etc. Existing passports must not be expired for at least 08 calendar months after the intended date of return. If Visas are required Superlink Travels (Pvt) Ltd. will advise you in obtaining your visas. However you have to be prepared to visit the Embassy to submit your documents (on the request of the Embassy).

**11. SPECIAL REQUESTS**

Any special requests (Such as special dietary requirement meals, rooms on the same floor at the hotels.) made at the time of booking are on a request only basis. Superlink Travels (Pvt) Ltd. will do endeavor to accommodate requests but cannot guarantee these can be met or achieved in all instances.

**Airline Seating** - Since this is a group booking made with the airline, any special request for airline seating has to be made only directly at the time of checking in at the Airline check-in counters.

**Frequent flyer** - Your frequent flyer number should be added directly at the time of check-in at the check-in counters

**12. RESPONSIBILITIES**

Superlink Travels (Pvt) Ltd agrees to make reservations with the principal offering the services described in this and ancillary brochures. Superlink Travels (Pvt) Ltd does not accept any responsibility for default causing loss or injury to persons whether by negligence or otherwise on the part of the principal providing any facilities for any person taking advantage of the services described in this brochure. Superlink Travels (Pvt) Ltd is not liable for any loss suffered by any additional expense caused or occasioned by delay, change of aircraft service, alteration to any other travel service, illness, injury, strike, civil disturbance, terrorism, quarantine, flood or other disturbances of whatsoever nature interfering with, altering, or adding to the cost of the service requested or booked. Superlink Travels (Pvt) Ltd is not liable for any dissatisfaction the client may have with the properties. The above exclusions of liability are subject to any statutory liability which unresolved may not be excluded by law.

**13. DOCUMENTATION**

It is the client's responsibility to carefully check all confirmation documentation, itineraries, air tickets and vouchers immediately upon receipt (particularly in regard to spelling of names and travel dates), and advise Superlink of any discrepancies.

**14. DAMAGES CAUSED BY NEGLIGENCE / PERSONAL RESPONSIBILITIES**

Any negligence or willful act caused or facilitated by the passenger to any property such as in Hotels/Airlines/Restaurants etc. the cost of damage has to be borne by the passenger and paid directly to the responsible authorities/ person(s).

**15 - INTOXICATION**

Alcohol and intoxicating substances are not permitted to be consumed in the coach in keeping with the relevant countries' regulations. Further, any intoxicated passenger will be off loaded by the airline or refused accommodation in the coach. Such passengers have to find their own way to the next destination bearing the cost on their own and Superlink Travels (Pvt) Ltd is not responsible for any action taken by the Authorities / Security Personnel / Agents.

**16 DEPARTURE / TRANSIT**

It is the passenger's responsibility to be on time at the boarding gates/check-in counters. In the event you miss the flight, Superlink Travel (Pvt) Ltd. will not be held responsible for re-connecting your flight to the next destination. Due to your late arrival at the airport for departure flight/transit or due to any other reason. If the airport authorities refuse to board the passenger, such passenger will have to find their own way to their home country or to the final destination bearing the cost provided that the visa requirements and the government rules permit you to join the group mid-way. If not you will have to return to your home country at your expense.

In the event you have been refused to exit/departure by the Authorities' due to the above or similar reasons your pilgrimage/tour is nonrefundable as per clause no. 05.

**17. FOR ALL PASSENGERS TRAVELING FROM COLOMBO AND ALL PASSENGERS JOINING FROM DIFFERENT DESTINATIONS.**

I am aware that all Foreign & Sri Lankan Passport Holders residing abroad It is compulsory that I purchase the travel insurance from my country of residence covering health / Medical / Hospitalization/ Trip Cancellation at the time the booking is made with Superlink Travels (Pvt) Ltd.

**18.** I acknowledge that I am aware that in the event of trip cancellation/ known events / scrutinize disruption / cancellation coverage of insurance policies / flight cancellations / delayed, lost or damaged baggage or any other inconvenience caused directly or indirectly by force majeure / acts of God, Superlink Travels (Pvt) Ltd will not be responsible.

I have read and understood the above tour conditions. I am also aware that I am required and obligated to leave a copy of this agreement with the Emergency Contact Person / Family member and make such person also aware of the conditions contained herein.

In case of emergency: Name ..... Contact Number .....

Name:.....

N.I.C / Passport no.....

Date: ..... Signature .....

