



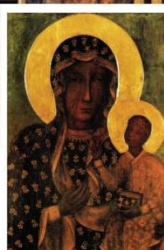
**Superlink Travels Offers**

**Special 09 Day Pilgrimage and Tour to**

# Poland & Prague

(Czech Republic)

**Now  
More Days**



**Including Visits to :**

## Poland

- Shrine of Divine Mercy Lagiewniki
- Shrine of the Black Madonna
- St. Mary's Basilica
- St. Faustina's convent & tomb
- St. John Paul II Center in Lagiewniki
- Wadowice - The Birthplace of St. John Paul II (Rev. Karol Wojtyla) & Museum
- Krakow & Czestochowa
- Auschwitz Concentration Camp
- Old Town



## Prague

- Shrine of the Infant Jesus of Prague
- The Charles Bridge
- Astronomical Clock
- River Vltava with a Dinner Cruise

**Including a 45 minutes  
Luxurious Horse Carriage  
Ride in Poland  
and the best  
Folklore Dinner Show in Prague**



### Price includes

- Breakfast & Dinner \*\* • Tips
- Air Tickets
- Hotel Accommodation

**Departure dates in 2019**

**12 May**

**Full**

**13 May**

**15 Sep**

**Full**

**16 Sep**



**Rs. 350,000/-\***

per person on twin sharing basis

\*\* As per the Itinerary \* Conditions Apply

**For bookings please contact:**

**Superlink Travels (Pvt) Ltd.**

'Lucky Plaza' 70, Kollupitiya Lane (St. Anthony's Mawatha) Colombo 03

Please visit our website to see details and send your inquiries:

**Tel : +94 11 230 1616, 257 5900, 257 5698**

**Email: superlink@superlink.eureka.lk**

**www.superlinktravels.com**



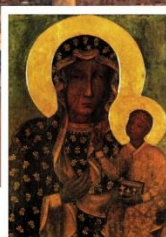


**Superlink Travels Offers**

**Special 09 Day Pilgrimage and Tour to**

**Poland  
& Prague**

**(Czech Republic)**



## **Itinerary**

### **DAY 01**

Group report at the Bandaranaike International Airport. Group met by the Superlink Representative at the Departure Lounge. Depart to **Prague**.

Arrive in Prague

**Dinner not included and Overnight stay.**

### **DAY 02**

Breakfast at Hotel

Visit the famous **Shrine of the Infant Jesus of Prague**

Tour of **"The Golden City of Prague"** *It is one of the most enchanting cities of Europe The unique atmosphere, the combination of Czech, German and Jewish history, the virtually un-spoilt historic heart of the city and its wealth of legends attracts many visitors throughout the year to this great city. Lunch not included*

You will see the **Charles Bridge** that is adorned with many baroque statues and the old town square with the **Astronomical Clock**.

Participate **Folklore Show with Dinner**.

**Transfer to hotel for overnight stay**

### **DAY 03**

Breakfast at hotel

Entire day for your Shopping and etc. **Lunch not included**

Evening **Dinner Cruise on the River Vltava**

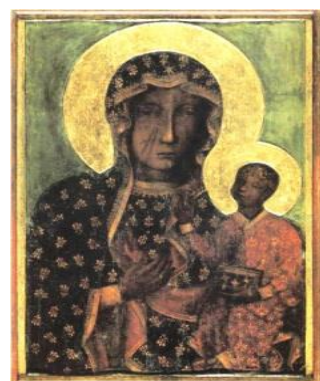
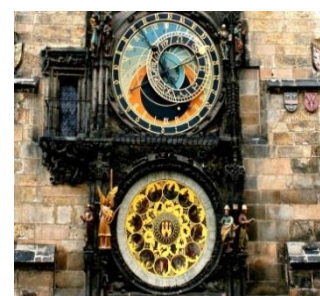
**Transfer to Hotel for overnight stay**

### **DAY 04**

Breakfast at hotel

After breakfast depart to **Poland /Krakow**, city and capital of *Małopolskiewojewództwo* (province), southern Poland, lying on both sides of the upper Vistula River. One of the largest cities in Poland, it is known primarily for its grand historic architecture and cultural leadership; UNESCO designated its old town area as a World Heritage site. **Lunch not included**

**Transfer to Hotel for dinner and overnight stay**



**Superlink Travels (Pvt) Ltd.** 'Lucky Plaza' 70, Kollupitiya Lane, Colombo 03 – Sri Lanka | © Copyright - All rights reserved

Web: [www.superlinktravels.com](http://www.superlinktravels.com) | Email: [superlink@superlink.eureka.lk](mailto:superlink@superlink.eureka.lk) | Tel: (+94 11) 257 3767, 257 5698, Fax: (+94 11) 257 5832

**DAY 05**

Breakfast at hotel

After breakfast meet with local guide & full day visits in **Krakow**. A walking pilgrimage & tour through the old town. Participate in a 45 minutes **Luxurious Horse Carriage Ride** in the city of **Krakow** (Weather permitting). Visit **St. Mary's Basilica**- *It was not the intention of building a monument Yvonne Bishop, but concern for the spiritual growth of the capital's residents.*

**Lunch not included**

**Shrine of Devine Mercy Lagiewniki**, (Now the 19th-century brick convent of the Sisters of God's Mother of Mercy is part of the vast Sanctuary of Divine Mercy (Sanktuarium Bozego Milosierdzia in Polish) complete with a spacious main church, an array of chapels, a viewing tower, a hostel and a modern pastoral lodge, cafeterias, shops, parking lots, etc.)

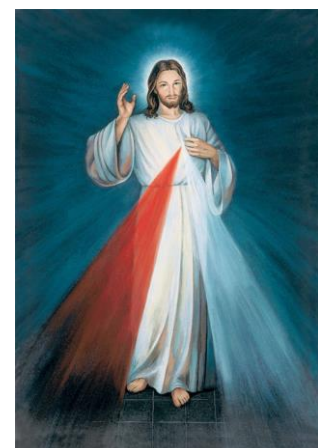
**St. Faustina's convent & tomb** (The third of ten children, Saint Maria Faustina Kowalska was born into a pious peasant family in 1905, in Glogowiec, Poland. She was christened Helena. At the age of seven years, she first heard an interior call to the religious life.)

**DAY 06**

Breakfast at hotel. Visit to the Pope's (Rev. Karol Wojtyla (**St. John Paul II**)) home-town **Wadowice** a visit to the Presentation of the Blessed Virgin Mary Basilica and the home of the Holy Father now converted in to a **Museum**.

**Lunch not included**

**Transfer to hotel for dinner and overnight stay**

**DAY 07**

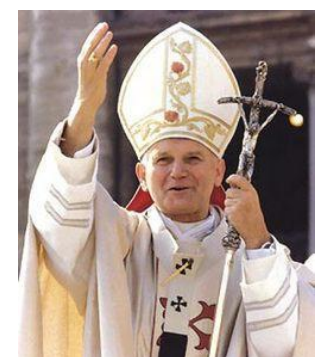
Breakfast at hotel

Departure to **Auschwitz**, The **Auschwitz concentration camp** complex was the largest of its kind established by the Nazi regime. It included three main camps, all of which deployed incarcerated prisoners at forced labor.

**Lunch not included**

Depart to **Czestochowa**, visit the shrine of **Black Madonna**, is among that small group of Black Madonnas recognized throughout the entire world, largely due to the recent manifestations of public piety shown by the reigning Polish Pope, John Paul II.

**Transfer to hotel for dinner and overnight stay**

**DAY 08**

Breakfast at hotel.

**Lunch not Included**

Transfer to the Airport for the departure flight to Colombo.

**DAY 09**

Arrive in Colombo

---- PILGRIMAGE ENDS ----

**The sequences of visits are subject to change.**





## **09DAY PILGRIMAGE & TOUR TO POLAND & PRAGUE**

### **ITINERARY**

: A detailed itinerary is enclosed herewith

### **PRICE OF PILGRIMAGE & TOUR**

#### **:SHARING TWIN**

Rs.350, 000/- per person

#### **SINGLE ROOM**

Rs.480, 000/- per person

#### **TRIPLE ROOM**

Rs.350, 000/- per person

#### **CHILD BETWEEN 2 – 12 YRS**

Rs.350, 000/- per person

#### **INFANT (0 – BELOW 2 YEARS)**

Rs.125, 000/- per infant

The above rates are subject to change

### **PILGRIMAGE & TOUR PRICE INCLUDES :**

- Economy Class Return Air Fare
- Hotel Accommodation in Poland & Prague
- All Meals as mentioned in the Itinerary
- Tips for the entire pilgrimage & tour (*Guides, Drivers, Hotel/Restaurant Staff & Airport Representative*)
- Arrival/Departure/Transfers and Sightseeing in Poland & Prague by Deluxe A/C Coach
- Professionally trained Superlink Representative will accompany the Group
- Airport taxes in Sri Lanka and Fuel Surcharge on Air Ticket

### **PILGRIMAGE & TOUR PRICE EXCLUDES :**

- Transportation to/from Colombo Airport
- Visa Fee
- Meals as mentioned in the Itinerary
- Please note generally in case of any illness or accident, 2 weeks hospital stay in overseas countries and repatriation by air generally cost approximately over US\$ 75,000/-  
Travel Insurance covering health & baggage (Insurance Policy is a must for every passenger).  
It is compulsory to purchase the Travel Insurance from Superlink Travels.
  - Up to 64 years - LKR 8,500/-
  - Between 65 to 74 years - LKR 13,500/-
  - Between 75 to 85 years - LKR 19,500/-

A. Please note that the Travel Insurance does not cover any pre-existing illnesses.  
B. Please note that USD100 will be a deductible amount from your claim.
- Any Meals during transit at the Airports
- Excess baggage charges
- Beverages during the meals
- Laundry
- Expenses of a personal nature

### **SPECIAL NOTE:**

- Sri Lankan Passport Holders residing/ employed in overseas/ arriving directly in Prague
  - ✓ *Must obtain your Schengen Visa from your country of residence*
  - ✓ *Must obtain the Travel Insurance (which covers the entire journey) from your country of residence*
- Foreign Passport Holders travelling through Sri Lanka
  - ✓ *Must obtain the Visa to Sri Lanka/ Travel Insurance (which covers the entire journey) from your country of residence (Please visit [www.immigration.gov.lk](http://www.immigration.gov.lk) for more details)*
- Foreign Passport Holders arriving directly in Prague
  - ✓ *Must obtain the Travel Insurance (which covers the entire journey) from your country of residence*







Pilgrimage / Tour Conditions valid for bookings made after 27<sup>th</sup> November 2018

Departure:

**Superlink Travels - Conditions for****1. IMPORTANT NOTICE**

Please carefully read the following conditions before you complete the Booking Form as these are the basis for acceptance of all bookings.

**2. TRAVEL INSURANCE**

Superlink Travels recommends Travel Insurance of USD 75,000 per person that safeguards against: baggage loss; medical expenses; theft and other contingencies. Superlink makes no representations or guarantees concerning reimbursements of funds paid by you under any insurance claim. You agree not to hold Superlink responsible for any decision made by insurers, and/or by any suppliers, or requirements of any foreign country, government authority or overseas laws and policies. Sri Lankan passport holders living out of Sri Lanka 6 months from the date of booking should obtain their own travel insurance from the country of overseas residence covering the entire pilgrimage/tour. Foreign Passport holders could obtain Travel Insurance from their country of residence covering the entire pilgrimage/tour. Furthermore, travel insurance does not cover pre-existing illnesses and it is the passenger's sole responsibility to obtain a special travel insurance covering their pre-existing illnesses. All passengers traveling on Pilgrimage/Tour should have sufficient funds for any Hospitalizations or any medical treatments.

**3. NEW BOOKINGS:** All new bookings must be accompanied by

\* Completed and signed Booking Form and the Tour Conditions

\* Photocopy of current passport (details page only)

\* Bookings must be made by full payments or required deposits by Superlink Travels (Pvt) Ltd. as per the Itinerary.

In the event you are confirming your booking as an individual /group/ family or any other accompanied person(s) and if you/one member cancels the tour/pilgrimage please note that their deposit cannot be transferred to any other person or substituted and the payment is non-refundable under any circumstance including medical grounds as per the cancellation policy 3A.

**3A Cancellation Fees**

Between date of booking to 120 days before departure date: Rs. 100,000.

Between 119 days to 90 days before departure date: Rs. 150,000.

Within 89 days before departure date: NO REFUND.

**4. ADDITIONAL TRAVEL ARRANGEMENTS**

Superlink can arrange additional flights, tours, and accommodation etc. for pilgrims / tour participants wishing to extend their pilgrimage / tour. Superlink consultants can arrange your complete itinerary and advise additional costs. All booking terms and conditions of the Tour Operator being used may vary from Superlink's conditions and must be adhered to Pilgrims/Tour participants who have booked to return at a later date than the group.

**5. PAYMENTS**

To be paid at the time of booking.

**Booking period: on promotional travel dates as mentioned only**

Valid on given travel, pilgrimage, holiday packages as mentioned and on mentioned dates as per our brochure / advertisement. Please visit our website [www.superlinktravels.com](http://www.superlinktravels.com). Promotional prices displayed, said, mentioned in the promotion above are applicable to all ages. Price includes, including taxes, fees, airport taxes, once booked and confirmed and paid the deposits or full payments in form of cash, credit card, cheque, Bank transfers/remittance are non-transferable, non-refundable as per cancellation policy 3A and date changes are not possible. In the event you are confirming your booking as an individual/ group /family accompanied person(s) and if you /one member cancels the tour/ pilgrimage please note that their deposit(s) cannot be transferred to any other person substituted under any circumstance including on medical grounds or for any reason(s). Bookings can be done only at Superlink Travels (Pvt) Ltd. Sales office for Sri Lankan passport holders. All Foreign passport holders making bookings are accepted only along with the tour condition. It is compulsory that you should forward the tour conditions along with the payment.

**Final Payment:** (If any) No later than 16 weeks prior to departure date. If not for any delayed payments Superlink will be compelled to debit you with additional 0.1% per day (maximum for 07days) thereafter if Superlink does not receive the balance amount within this period it will be presumed as you have cancelled your trip and deposit is non-refundable as per the tour conditions.

**6. ROOM TYPES**

Prices are based on a twin / triple shared room. An individual pilgrim/tour participant request to share is accepted at the time of booking and he/she will be accommodated in a twin / triple room. Pilgrim / tour participant electing to twin / triple share with an unknown partner of the same gender do so in the full knowledge that Superlink cannot guarantee the compatibility or medical fitness of your roommate. A single supplement surcharge will apply if Superlink is unable to provide a roommate. Specific requests (Single / Double / Triple) must be made at time of booking and supply cannot be guaranteed. Single supplement surcharge applies for single room requests. Requests for triple room will be for a twin-bedded room with extra roll-away bed. Certain pilgrims with a serious or ongoing medical condition or mobility constraint (Subject to approval) must bring an accompanying companion / carer. Smokers (requesting to share with an unknown partner) may be required to pay a single room supplement if a suitable partner is not found. In the event the passenger refuses to pay the single supplement the booked pilgrimage/tour will be deemed canceled as per clause no. 05.

**7. AIRLINES**

The scheduled flights used for all group departures are subject to the usual conditions of the carrying airline and relevant to international law. We therefore accept no responsibility for alterations to air schedules or scheduling. During transits Superlink or the airline will not provide any food or beverages at the airports.

**\* Pilgrims / Tour Participants from Overseas**

Pilgrims / Tour participants from overseas should arrive at least 24 hours prior to departure of tour in Sri Lanka to avoid miss-connecting flights due to delayed arrival and due to any rescheduling / early departure of flights. And on your return too after completion of the trip, your departure from Sri Lanka to your destination should be after 24 hours (This will avoid missing your onward flights to your destination due to late arrivals of flight/flight schedule).

**8. HEALTH**

Any medical condition, disability or mobility difficulty that may affect the functioning of the group must be advised on the booking form. Any pilgrim / tour participant with a pre-existing medical condition or illness must declare the nature of such condition at the time of booking and make arrangements for the provision of any drugs or other cause of treatment that may be required during the tour. Any relevant health or mobility conditions not adequately disclosed may result in your immediate and direct return to your point of departure at your expense and without availability of refund. This clause is necessary to assure the health and safety of all group members and in particular those with whom you may be sharing a room. We recommend you consult your doctor in respect of your intended travel as this may also have some bearing on your application for travel insurance. Furthermore, your doctor or the relevant Government Health authorities could advise further on any vaccination requirements necessary. Certain pilgrims/tour participants with a serious or ongoing medical condition or mobility constraint (Subject to approval) must bring an accompanying companion / carer. (Refer SECTION 9- MINIMUM MOBILITY REQUIREMENTS) all requests for health / medical clearance submitted by pilgrims/tour participants are at the sole discretion of the operating carrier / tour operator. Superlink cannot be held responsible for the outcome of these decisions.

**9. MINIMUM MOBILITY REQUIREMENTS**

Many of the sites visited on our pilgrimages / tours require a reasonable amount of walking. Superlink must be advised, at the time of booking, of any physical or health condition that may affect your mobility. Superlink will make reasonable attempts to accommodate any special needs but is not responsible for any denial of services by carriers, hotels, restaurants or any independent suppliers. Most transportation services, including touring coaches are not equipped with wheelchair ramps. Superlink regrets that it cannot provide individual assistance to a pilgrim for walking, dining, getting on or off coaches or other personal needs. A qualified and physically able companion / carer must accompany travelers who need such assistance and must assume responsibility of their wellbeing.

**10. PASSPORT – VISA**

Each Pilgrim / Tour Participant is personally responsible for ensuring they possess valid travel documentation. New passport applications must be personally applied for disfigured / torn passports. Passport(s) are not accepted, in the event you have a disfigured / torn passport we suggest you to obtain a new Passport. In the event you travel on a disfigured / torn or otherwise unacceptable Passport Superlink Travels will not be responsible for any issues at the Immigration, etc. Existing passports must not be expired for at least 08 calendar months after the intended date of return. If Visas are required Superlink Travels (Pvt) Ltd. will advise you in obtaining your visas. However you have to be prepared to visit the Embassy to submit your documents (on the request of the Embassy).

**11. SPECIAL REQUESTS**

Any special requests (Such as special dietary requirement meals, rooms on the same floor at the hotels.) made at the time of booking are on a request only basis. Superlink will do endeavor to accommodate requests but cannot guarantee these can be met or achieved in all instances.

**Airline Seating** - Since this is a group booking made with the airline, any special request for airline seating has to be made only directly at the time of checking in at the Airline check-in counters.

**Frequent flyer** - Your frequent flyer number should be added directly at the time of checking in at the check-in counters.

**12. RESPONSIBILITIES**

Superlink agrees to make reservations with the principal offering the services described in this and ancillary brochures. Superlink does not accept any responsibility for default causing loss or injury to persons whether by negligence or otherwise on the part of the principal providing any facilities for any person taking advantage of the services described in this brochure. Superlink is not liable for any loss suffered by any additional expense caused or occasioned by delay, change of aircraft service, alteration to any other travel service, illness, injury, strike, civil disturbance, terrorism, quarantine, flood or other disturbances of whatsoever nature interfering with, altering, or adding to the cost of the service requested or booked. Superlink is not liable for any dissatisfaction the client may have with the properties. The above exclusions of liability are subject to any statutory liability which unresolved may not be excluded by law.

**13. DOCUMENTATION**

It is the client's responsibility to carefully check all confirmation documentation, itineraries, air tickets and vouchers immediately upon receipt (particularly in regard to spelling of names and travel dates), and advise Superlink of any discrepancies.

**14. DAMAGES CAUSED BY NEGLIGENCE / PERSONAL RESPONSIBILITIES**

Any negligence or willful act caused or facilitated by the passenger to any property such as in Hotels/Airlines/Restaurants etc. the cost of damage has to be borne by the passenger and paid directly to the responsible authorities/ person(s).

**15 - INTOXICATION**

Alcohol and intoxicating substances are not permitted to be consumed in the coach in keeping with the relevant countries' regulations. Further, any intoxicated passenger will be off loaded by the airline or refused accommodation in the coach. Such passengers have to find their own way to the next destination bearing the cost on their own and Superlink Travels (PVT) Ltd is not responsible for any action taken by the Authorities / Security Personnel / Agents.

**16 DEPARTURE / TRANSIT**

It is the passenger's responsibility to be on time at the boarding gates/check-in counters. In the event you miss the flight, Superlink travel (PVT) Ltd. will not be held responsible for re-connecting your flight to the next destination. Due to your late arrival at the airport for departure flight/transit or due to any other reason. If the airport authorities refuse to board the passenger, such passenger will have to find their own way to their home country or to the final destination bearing the cost provided that the visa requirements and the government rules permit you to join the group mid-way. If not you will have to return to your home country at your expense.

In the event you have been refused to exit/departure by the Authorities' due to the above or similar reasons your pilgrimage/tour is non-refundable as per clause no. 05.

I have read and understood the above tour conditions. I am also aware that I am required and obligated to leave a copy of this agreement with the Emergency Contact Person / Family member and make such person also aware of the conditions contained herein.

In case of emergency: Name ..... Contact Number .....

Name:.....

N.I.C / Passport no.....

Date: ..... Signature .....

