

Visit to a world of adventure, Experience the very best of the African Continent

Visiting Places :

- ◆ Masai Mara ◆ Amboseli ◆ Nairobi
- ◆ The Ark ◆ Samburu Game Reserve
- ◆ Sweet Water's Camp ◆ Lake Nakuru

KENYA



09 Days 08 Nights

Itinerary

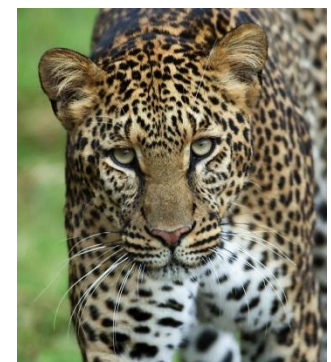
Day 01

Group report at the Bandaranaike International Airport. Group met by the Superlink Representative at the Departure Lounge.

Depart to **Nairobi**.

Arrive in **Nairobi**. Meet / assist at the airport and transfer to **Amboseli National Park** which is situated right at the footsteps of Mount Kilimanjaro the highest Mountain in Africa

Dinner and overnight stay at the lodge



Day 02

Early morning games drive in **Amboseli National Park**.

Further game drive OR spend the rest of the mid-morning at the pool side.

Lunch

After lunch, late afternoon, unlimited game drive in the park.

Dinner and overnight stay will be at a Lodge or camp.

Amboseli National Park

Amboseli lays immediately North West of Mt. Kilimanjaro, on the border with Tanzania. Large concentrations of wildlife occur here in the dry season, making a popular tourist destination. It is surrounded by 6 communally owned group ranches. The National Park embodies 5 main wildlife habitats (open plains, acacia woodland, rocky thorn bush country, swamps and marshland) and covers part of a Pleistocene lake basin, now dry. Within this basin is a temporary lake, Lake Amboseli, which flood during years of heavy rainfall. It is famous for its big game and its great scenic beauty - the landscape is dominated by MT Kilimanjaro.

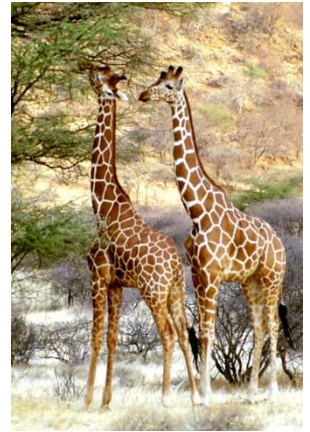


Day 03

After breakfast drive to **Aberdares**.

Rest of the day at the balconies watching wild animals as they come to drink water and lick salt at a waterhole on the base of the lodge.

Dinner and overnight at lodge.

**Day 04**

After breakfast depart for **Samburu Game Reserve**.

Lunch and afternoon game drive in the park where you may have a chance of seeing the Gerenuk, reticulated Giraffe, Beisa Oryx, Somali Ostrich and the Grevy's Zebra.

Dinner and overnight at lodge.

**DAY 05**

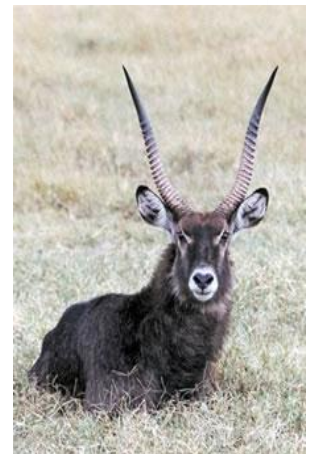
Early morning game drive in **Samburu Game Reserve**

Return to the lodge for breakfast.

Further game drive OR you can spend the rest of the mid-morning at the pool side.

After lunch, late afternoon, unlimited game drive in the park.

Dinner and overnight at lodge

**DAY 06**

After breakfast, depart for **Lake Nakuru National Park** briefly stopping at the Thompson Falls and at the Equator zero degrees to take pictures.

Thereafter driving through the scenic floor of the **Great Rift Valley** to arrive in time for lunch.

Afternoon game drive and bird watching at **Lake Nakuru Bird and Rhino Sanctuary** where you will have a chance of seeing both Black Rhino, Leopard which is a shy animal and the migratory birds Flamingos.

After the game drive depart to lodge for dinner and overnight stay.

Lake Nakuru National Park

Lake Nakuru National park is the most famous of the Great Rift Valley lakes and renowned for its magnificent bird life, especially the flamingos which seasonally flock there in there thousands. This 188sq. kms. Park is a paradise for those who are particularly interested in ornithology and also offers the opportunity of seeing White Rhino, the rare Rothschild's Giraffe, large herds of Buffalo and an abundance of various plains game. Sightings of Leopard resting in the branches of acacia trees are very common.



DAY 07

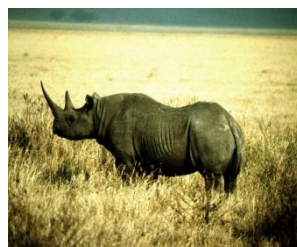
After an early breakfast, depart for **Masai Mara Game Reserve** driving through the scenic floor of the **Great Rift Valley** to arrive in time for lunch

After lunch unlimited game viewing at **Masai Mara Game Reserve** where you will have a chance of seeing "the big five", different varieties of birds and one of the best Savannah vegetation in the world.

Dinner and overnight the camp.

Masai Mara National Reserve

(Declared the 7th Wonder of The World) The **Masai Mara National Reserve** is probably the most famous and most visited Reserve in Kenya. It offers breathtaking views (as seen in the film "**Out of Africa**", much of which was filmed here), an extraordinary density of animals including "the Big Five" (lions, leopard, elephant, buffalo, rhinoceros) and many varieties of plains game. An impressive feature is the annual migration of wildebeests, zebras and gazelles from the plains of the Serengeti that cross the Tanzanian border and rivers to reach the Mara's grasslands from late June, tracked by predators: lion, leopard, cheetah, and hyena, and circled by vultures as their journey unfolds. Their dramatic river crossings are a reality for tourists visiting in early July-August. Apart from the seasonal migration, game viewing is excellent year round. Game includes elephant, black rhino, buffalo, plains zebra, hartebeest and big cats. The rivers are home to hippo and crocodiles. 452 species, 53 of which are raptors.

**DAY 08**

Early morning game drive in **Masai Mara Game Reserve**. Return to the lodge for breakfast.

Further game drive OR you can spend the rest of the mid-morning at the poolside.

After lunch, late afternoon, unlimited game drive in the park.

Dinner and overnight stay at lodge.

DAY 09

After breakfast, departure transfer to Nairobi airport for the return flight to Colombo.

DAY 10

Arrive in Colombo.

End of the Tour

The sequences of visits are subject to change.



10 DAY TOUR TO KENYA

ITINERARY : A detailed itinerary is enclosed herewith

PRICE OF TOUR

:SHARING TWIN
Rs.575, 000/- per person
SINGLE ROOM
Rs.675, 000/- per person
TRIPLE ROOM
Rs.575, 000/- per person
CHILD BETWEEN 2 – 12 YRS
Rs.575, 000/- per person
INFANT (BELOW 2 YEARS)
Rs.250, 000/- per infant

Special Offer - Book Now

SHARING TWIN
Rs 520,000/- per person
SINGLE ROOM
Rs 620,000/- per person
TRIPLE ROOM
Rs 520,000/- per person
CHILD BETWEEN 2 – 12 YRS
Rs 520,000/- per Child
INFANT (BELOW 2 YEARS)
Rs 165,000/- per infant

TOUR PRICE INCLUDES :

- Economy Class Return Air Fare
- Accommodation in Kenya
- All meals as mentioned in the itinerary
- Non A/C Toyota 4x4 Land cruiser / Van Vehicles are used for transfers in Nairobi and on Safari in Kenya & Tanzania
- Award winning English speaking guide throughout the tour
- Luggage limit of one soft bag per person during travel in Kenya. Hard cases should be avoided as they cannot fit in safari vehicles
- Airport taxes in Sri Lanka and Fuel Surcharge on Air Ticket
- All park entrance fees
- Unlimited Game Drives

TOUR PRICE EXCLUDES :

- Transportation to/from Colombo Airport
- Meals as mentioned in the itinerary
- Visa Fees for Kenya (Approximately US \$ 50 Per Person)
- Tips for the entire tour (*Guides, Drivers/ Hotel/Restaurant Staff & Airport Representative*)
Guides/ Drivers – US \$ 10 per person, per day / Hotel Bell boys – US \$ 1 per bag
- Please note generally in case of any illness or accident, 2 weeks hospital stay in overseas countries and repatriation by air generally cost approximately over US\$ 75,000/-
Travel Insurance covering health & baggage (Insurance Policy is a must for every passenger).
It is compulsory to purchase the Travel Insurance from Superlink Travels.
 - Up to 64 years - LKR 3,000/-
 - Between 65 to 74 years - LKR 6,000/-
 - Between 75 to 85 years - LKR 12,000/-
- Any Meals during transit at the Airports
- Excess baggage charges
- Beverages during the meals
- Laundry
- Expenses of a personal nature
- **LUGGAGE:** Space in the safari vehicle is limited and we request that you pay particular attention to the Following guidelines.

Your luggage is restricted to:

» 1 bag not exceeding 15kgs and 65x46 cm. We recommend that you pack your personal effects in an inexpensive barrel / sausage bag available from discount stores, hypermarkets and sports shops. We recommend that you utilize old or inexpensive luggage. Suitcases are unsuitable for our type of safaris. You may use a small/medium-sized rucksack, provided that it has no frame. If your first night is in Nairobi, you may wish to leave your unnecessary luggage at the Hotel or at a luggage leave area at your Own expenses and only take what you really need on the Safari



Pilgrimage / Tour Conditions for the Promotion Only

Departure:

Superlink Travels - Conditions for

1. IMPORTANT NOTICE

Please carefully read the following conditions before you complete the Booking Form as these are the basis for acceptance of all bookings.

2. TRAVEL INSURANCE

Superlink Travels recommends Travel Insurance of USD 75,000 per person that safeguards against: baggage loss; medical expenses; theft and other contingencies. Superlink makes no representations or guarantees concerning reimbursements of funds paid by you under any insurance claim. You agree not to hold Superlink responsible for any decision made by insurers, and/or by any suppliers, or requirements of any foreign country, government authority or overseas laws and policies. Sri Lankan passport holders living out of Sri Lanka 6 months from the date of booking should obtain their own travel insurance from the country of overseas residence covering the entire pilgrimage/tour. Foreign Passport holders could obtain Travel Insurance from their country of residence covering the entire pilgrimage/tour. Furthermore, travel insurance does not cover pre-existing illnesses and it is the passenger's sole responsibility to obtain a special travel insurance covering their pre-existing illnesses. All passengers traveling on Pilgrimage/Tour should have sufficient funds for any Hospitalizations or any medical treatments.

3. NEW BOOKINGS: All new bookings must be accompanied by

- * Completed and signed Booking Form and the Tour Conditions
- * Photocopy of current passport (details page only)
- * Bookings must be made by full payments or required deposits by Superlink Travels (Pvt) Ltd. as per the Itinerary

In the event you are confirming your booking as an individual /group/ family or any other accompanied person(s) and if you/one member cancels the tour/ pilgrimage please note that their deposit cannot be transferred to any other person or substituted and the payment is nonrefundable under any circumstance including medical grounds.

4. ADDITIONAL TRAVEL ARRANGEMENTS

Superlink can arrange additional flights, tours, and accommodation etc. for pilgrims / tour participants wishing to extend their pilgrimage / tour. Superlink consultants can arrange your complete itinerary and advise additional costs. All booking terms and conditions of the Tour Operator being used may vary from Superlink's conditions and must be adhered to Pilgrims/Tour participants who have booked to return at a later date than the group.

5. PAYMENTS

To be paid at the time of booking.

Booking period: on promotional travel dates as mentioned only

Valid on given travel, pilgrimage, holiday packages as mentioned and on mentioned dates as per our brochure / advertisement. Please visit our website www.superlinktravels.com. Promotional prices displayed, said, mentioned in the promotion above are applicable to all ages. Price includes, including taxes, fees, airport taxes, once booked and confirmed and paid the deposits or full payments in form of cash, credit card, cheque, Bank transfers/remittance are non-transferable, non-refundable and date changes are not possible. In the event you are confirming your booking as an individual/ group /family accompanied person(s) and if you /one member cancels the tour/ pilgrimage please note that their deposit(s) cannot be transferred to any other person substituted under any circumstance including on medical grounds or for any reason(s). Bookings can be done only at Superlink Travels (Pvt) Ltd. Sales office for Sri Lankan passport holders, All Foreign passport holders making bookings are accepted only along with the tour condition. It is compulsory that you should forward the tour conditions along with the payment.

Final Payment: (If any) No later than 12 weeks prior to departure date. If not for any delayed payments Superlink will be compelled to debit you with additional 0.1% per day (maximum for 07days) thereafter if Superlink does not receive the balance amount within this period it will be presumed as you have cancelled your trip and deposit is non-refundable as per the tour conditions.

6. ROOM TYPES

Prices are based on a twin / triple shared room. An individual pilgrim/tour participant request to share is accepted at the time of booking and he/she will be accommodated in a twin / triple room. Pilgrim / tour participant electing to twin / triple share with an unknown partner of the same gender do so in the full knowledge that Superlink cannot guarantee the compatibility or medical fitness of your roommate. A single supplement surcharge will apply if Superlink is unable to provide a roommate. Specific requests (Single / Double / Triple) must be made at time of booking and supply cannot be guaranteed. Single supplement surcharge applies for single room requests. Requests for triple room will be for a twin-bedded room with extra roll-away bed. Certain pilgrims with a serious or ongoing medical condition or mobility constraint (Subject to approval) must bring an accompanying companion / career. Smokers (requesting to share with an unknown partner) may be required to pay a single room supplement if a suitable partner is not found. In the event the passenger refuses to pay the single supplement the booked pilgrimage/tour will be deemed canceled as per clause no. 05.

7. AIRLINES

The scheduled flights used for all group departures are subject to the usual conditions of the carrying airline and relevant to international law. We therefore accept no responsibility for alterations to air schedules or scheduling. During transits Superlink or the airline will not provide any food or beverages at the airports.

*** Pilgrims/Tour Participants from Overseas**

Pilgrims / tour participants from overseas should arrive at least 24 hours prior to departure of tour in Sri Lanka to avoid miss-connecting flights due to delayed arrival and due to any rescheduling / early departure of flights. And on your return too after completion of the trip, your departure from Sri Lanka to your destination should be after 24 hours (This will avoid missing your onward flights to your destination due to late arrivals of flight/flight schedule.

8. HEALTH

Any medical condition, disability or mobility difficulty that may affect the functioning of the group must be advised on the booking form. Any pilgrim / tour participant with a pre-existing medical condition or illness must declare the nature of such condition at the time of booking and make arrangements for the provision of any drugs or other cause of treatment that may be required during the tour. Any relevant health or mobility conditions not adequately disclosed may result in your immediate and direct return to your point of departure at your expense and without availability of refund. This clause is necessary to assure the health and safety of all group members and in particular those with whom you may be sharing a room. We recommend you consult your doctor in respect of your intended travel as this may also have some bearing on your application for travel insurance. Furthermore, your doctor or the relevant Government Health authorities could advise further on any vaccination requirements necessary. Certain pilgrims/tour participants with a serious or ongoing medical condition or mobility constraint (Subject to approval) must bring an accompanying companion / career. (Refer SECTION 9- MINIMUM MOBILITY REQUIREMENTS) all requests for health / medical clearance submitted by pilgrims/tour participants are at the sole discretion of the operating carrier / tour operator. Superlink cannot be held responsible for the outcome of these decisions.

9. MINIMUM MOBILITY REQUIREMENTS

Many of the sites visited on our pilgrimages / tours require a reasonable amount of walking. Superlink must be advised, at the time of booking, of any physical or health condition that may affect your mobility. Superlink will make reasonable attempts to accommodate any special needs but is not responsible for any denial of services by carriers, hotels, restaurants or any independent suppliers. Most transportation services, including touring coaches are not equipped with wheelchair ramps. Superlink regrets that it cannot provide individual assistance to a pilgrim for walking, dining, getting on or off coaches or other personal needs. A qualified and physically able companion / career must accompany travelers who need such assistance and must assume responsibility of their wellbeing.

10. PASSPORT – VISA

Each Pilgrim / Tour Participant is personally responsible for ensuring they possess valid travel documentation. New passport applications must be personally applied for disfigured / torn passports. Passport(s) are not accepted, in the event you have a disfigured / torn passport we suggest you to obtain a new Passport. In the event you travel on a disfigured / torn or otherwise unacceptable Passport Superlink Travels will not be responsible for any issues at the Immigration, etc. Existing passports must not be expired for at least 08 calendar months after the intended date of return. If Visas are required Superlink Travels (Pvt) Ltd. will advise you in obtaining your visas. However you have to be prepared to visit the Embassy to submit your documents (on the request of the Embassy).

11. SPECIAL REQUESTS

Special requests (Such as special dietary requirement meals, rooms on the same floor at the hotels,) made at the time of booking are on a request only basis. Superlink will do endeavor to accommodate requests but cannot guarantee these can be met or achieved in all instances.

Airline Seating - Since this is a group booking made with the airline, any special request for airline seating has to be made only directly at the time of checking in at the Airline check-in counters.

Frequent flyer- Your frequent flyer number should be added directly at the time of checking in at the check-in counters.

12. RESPONSIBILITIES

Superlink agrees to make reservations with the principal offering the services described in this and ancillary brochures. Superlink does not accept any responsibility for default causing loss or injury to persons whether by negligence or otherwise on the part of the principal providing any facilities for any person taking advantage of the services described in this brochure. Superlink is not liable for any loss suffered by any additional expense caused or occasioned by delay, change of aircraft service, alteration to any other travel service, illness, injury, strike, civil disturbance, terrorism, quarantine, flood or other disturbances of whatsoever nature interfering with, altering, or adding to the cost of the service requested or booked. Superlink is not liable for any dissatisfaction the client may have with the properties. The above exclusions of liability are subject to any statutory liability which unresolved may not be excluded by law.

13. DOCUMENTATION

It is the client's responsibility to carefully check all confirmation documentation, itineraries, air tickets and vouchers immediately upon receipt (particularly in regard to spelling of names and travel dates), and advise Superlink of any discrepancies.

14. DAMAGES CAUSED BY NEGLIGENCE / PERSONAL RESPONSIBILITIES

Any negligence or willful act caused or facilitated by the passenger to any property such as in Hotels/Airlines/Restaurants etc. the cost of damage has to be borne by the passenger and paid directly to the responsible authorities/ person(s).

15 - INTOXICATION

Alcohol and intoxicating substances are not permitted to be consumed in the coach in keeping with the relevant countries' regulations. Further, any intoxicated passenger will be off loaded by the airline or refused accommodation in the coach. Such passengers have to find their own way to the next destination bearing the cost on their own and Superlink travels (PVT) Ltd is not responsible for any action taken by the Authorities / Security Personnel / Agents.

16 DEPARTURE / TRANSIT

It is the passenger's responsibility to be on time at the boarding gates/check-in counters. In the event you miss the flight, Superlink travel (PVT) Ltd. will not be held responsible for re-connecting your flight to the next destination. Due to your late arrival at the airport for departure flight/transit or due to any other reason. If the airport authorities refuse to board the passenger, such passenger will have to find their own way to their home country or to the final destination bearing the cost provided that the visa requirements and the government rules permit you to join the group mid-way. If not you will have to return to your home country at your expense.

In the event you have been refused to exit/departure by the Authorities' due to the above or similar reasons your pilgrimage/tour is nonrefundable as per clause no. 05.

I have read and understood the above tour conditions. I am also aware that I am required and obligated to leave a copy of this agreement with the Emergency Contact Person / Family member and make such person also aware of the conditions contained herein.

In case of emergency: Name Contact Number

Name:.....

N.I.C / Passport no.....

Date: Signature