

Discover Japan by Rail

Land Only Group Tour

DISCOVER JAPAN BY RAIL

A chance to explore the country using *iconic* bullet trains

A comprehensive 13 day, *land only* tour exploring the very best of Japan's cultural, natural and UNESCO locations, whilst making use of the country's efficient railways. Journey on the famous bullet train, marvel at Mt. Fuji, stroll around cultural Kyoto, and discover the renowned Golden Pavilion. Other highlights include the 250 year old historic gassho-zukuri farmhouses in Shirakawago, a magnificent traditional Japanese garden in Kanazawa, the friendly deer in Nara, and the "floating" Itsukushi-ma Shrine in Miyajima. All this and more, using the included 14-Day Japan Rail Pass.

Note: This tour involves a lot of walking, so a good level of fitness is required.



Locations *you will* be visiting



Tokyo, Japan

Tokyo, Japan's busy capital, mixes the ultramodern and the traditional

—
3 Days & 2 Days



Kyoto, Japan

Kyoto, Japan's former capital, is home to 17 UNESCO World Heritage sites

—
2 Days



Hiroshima and Miyajima, Japan

Hiroshima, rebuilt after World War II, and stunning Miyajima island, are among the most visited spot...

—
1 Day



Osaka, Japan

Osaka is known for its modern architecture, vibrant nightlife and tasty street food.

—
1 Day



Takayama, Japan

Takayama, has a riverside setting and is surrounded by nature

—
1 Day



Kanazawa, Japan

Kanazawa is referred to as "little Kyoto" due to its ancient streets and well-preserved neighbour...

2 Days

YOUR TOUR ITINERARY

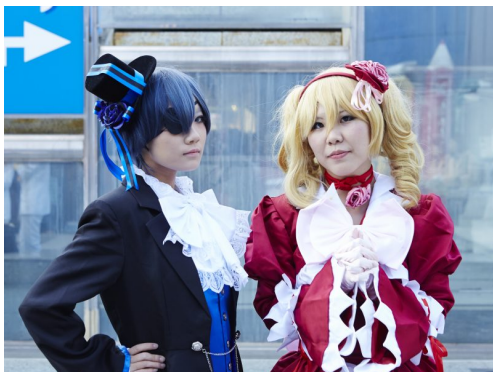
Discover Japan by Rail

13 day Tour Itinerary

An overview of your trip

DAY 1 Arrive Tokyo

On arrival at the airport in Tokyo, you will be welcomed by our representative and transferred to your accommodation. The rest of the day is at leisure.



DAY 2 Tokyo Tour

Start the day with a visit to the Meiji Shrine, a Shinto shrine dedicated to Emperor Meiji. Witness modern Japanese pop culture and fashion, on a walk through the Harajuku district, and see the famous Shibuya Crossing, one of the busiest intersections in the world. Continue to Hamarikyu Garden, the city's beautiful traditional Japanese gardens, located at the mouth of the Sumida River, and an oasis of calm in a busy metropolis. End the day at the World Trade Centre Observatory, with breathtaking views of the Tokyo Tower and this amazing city.

• Meals included: Breakfast, Lunch



DAY 3 **Mt. Fuji and Hakone Day Tour**

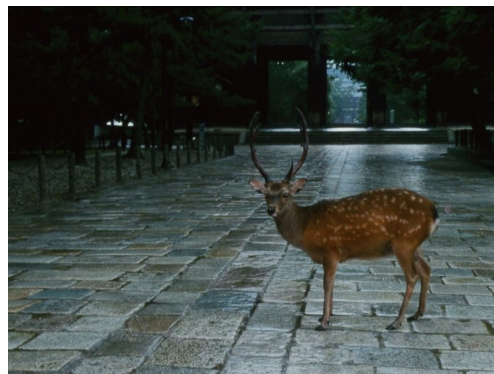
Catch the bullet train to Odawara, and relax on a pleasure boat cruise across tranquil Lake Ashi, admiring the picturesque surroundings. Ride the thrilling Hakone Ropeway, an aerial lift with spectacular views of Mt. Fuji and stunning Ashinoko Lake. Enjoy lunch at a local restaurant and return to your hotel in Tokyo. Pack a small bag for tonight, as your main luggage will be transferred overnight from Tokyo to Kyoto.

- Meals included: Breakfast, Lunch

DAY 4 **Tokyo to Kyoto and Nara**

After breakfast, a bullet train will whisk you to Kyoto and onward to Nara. Visit the Todaiji Temple (Great Buddha), the deer in the verdant Nara Park, and the Kasuga Taisha Shrine. Return to Kyoto and check-in to your accommodation.

- Meals included: Breakfast
- Transport: Train



DAY 5 **Kyoto Day Tour**

Today's Kyoto Day Tour includes visits to Nijo Castle which was built in 1603, the beautiful zen Kinkaku-ji Temple (Golden Pavilion), where the top two floors are completely covered in gold, and the Kiyomizu-dera Temple, which has a stunning panoramic view of Kyoto. The tour ends with some free time in the fascinating Gion District, to explore the winding back streets where you may see Geisha or Maiko as they travel to their evening appointments.

- Meals included: Breakfast



DAY 6 **Kyoto to Hiroshima and Miyajima**

Your main luggage will be transferred from Kyoto to Takayama. Pack a small bag for your stay in Hiroshima and Osaka. After breakfast, leave Kyoto by bullet train bound for Hiroshima. On arrival you will be met and transferred to the ferry to Miyajima. Here, the beautiful Itsukushima Shrine blends with the mountains and sea to form one of the country's most picturesque vistas. Return to Hiroshima and visit the Peace Memorial Park and Genbaku-dome (The Atomic Bomb Dome), designated a UNESCO World Heritage Site in 1996.

- Meals included: Breakfast
- Transport: Train

DAY 7 **Hiroshima to Osaka**

Walk to Hiroshima Station for your bullet train to Osaka. On Arrival, you will be met and taken to Osaka Castle and the Dotonbori District, one of the most famous areas of Osaka, known for its varied restaurants, to enjoy a tasty street food lunch. The remainder of the day is at leisure.

- Meals included: Breakfast, Lunch
- Transport: Train



DAY 8 **Osaka to Takayama**

Morning departure by train for Takayama. Visit Takayama-Jinya, a former government out-post, and explore fascinating Kamisannomachi Street, filled with lanes lined with Edo period wooden merchants houses. Check-in to your accommodation.

- Meals included: Breakfast
 - Transport: Train
-



DAY 9 Takayama to Shirakawago to Kanazawa

Travel by local bus to the UNESCO World Heritage-listed Shirakawago, famous for the 250 year old traditional Gassho-zukuri farmhouses, a style of building unique to this area. Then continue by local bus to Kanazawa, and check-in at your accommodation.

- Meals included: Breakfast
- Transport: Local bus

DAY 10 Kanazawa

This morning visit the traditional Japanese Kenrokuen Garden, and the Gold Leaf Museum in Kanazawa for an enjoyable Gold Leaf experience. The tour finishes on historic Higashi Chaya Street, filled with traditional wooden buildings.

- Meals included: Breakfast



DAY 11 Kanazawa to Tokyo

Hop aboard the bullet train for your journey from Kanazawa to Tokyo. Remainder of the day is at leisure, for last minute souvenir shopping and sightseeing.

- Meals included: Breakfast
- Transport: Train

DAY 12 Tokyo

Day at leisure, or perhaps enjoy some optional tours in Tokyo. Please let us know what you would like to do, and we can arrange it for you.

- Meals included: Breakfast




DAY 13 Onward Journey

Enjoy breakfast at the hotel, before making your onward journey.

- Meals included: Breakfast

Optional Extras - Cultural Experiences

There is some free time in your itinerary for you to explore on your own, or treat yourself to an excursion. Use the links below to create a to-do list, or, if you'd prefer us to book you onto one of these or any other excursions, please let us know when booking your tour.




JAPAN

Japan: Sushi Workshop Morning Tour, Tokyo

Experience hand-shaping and rolling sushi from a Tsukiji sushi chef and tour around Tsukiji Outer Fish Market to have an insight into how chef selects their fish for sushi.

[VIEW THIS PACKAGE >](#)




JAPAN

Japan: Tokyo Sumo Experience & Chanko Lunch

Be a sumo wrestler for a day! Learn from the Sumo wrestlers about the history, practice and the tournaments. Try on a Sumo costume and challenge a Sumo wrestler to a match. Enjoy the traditional and symbolic meal Chanko-nabe.

[VIEW THIS PACKAGE >](#)




JAPAN

Japan: Dinner with Maiko, Kyoto

Enjoy a traditional dinner with a Maiko, or apprentice Geisha and enjoy two traditional dance performances. Opportunity to ask questions and take photos with Maiko.

[VIEW THIS PACKAGE >](#)



JAPAN

Japan: Samurai Experience, Osaka

Be a Samurai for a day! Learn about the Samurai (old Japanese soldier) in Kimono or Ninja costume!

[VIEW THIS PACKAGE >](#)

YOUR HOLIDAY DETAILS

Departures and Prices 2020 / 21

Depart	Return	Days	Price from	Availability	Reservation
03/03/2020	15/03/2020	13	£2,695	Spaces available	>
12/05/2020	24/05/2020	13	£2,695	Spaces available	>
09/06/2020	21/06/2020	13	£2,595	Spaces available	>
08/09/2020	13/09/2020	13	£2,595	Spaces available	>
06/10/2020	18/10/2020	13	£2,695	Spaces available	>
20/10/2020	01/11/2020	13	£2,695	Spaces available	>
03/11/2020	15/11/2020	13	£2,695	Spaces available	>
17/11/2020	29/11/2020	13	£2,695	Spaces available	>
02/03/2021	14/03/2021	13	£2,695	Spaces available	>
11/05/2021	23/05/2021	13	£2,695	Spaces available	>
08/06/2021	20/06/2021	13	£2,595	Spaces available	>

Single supplement from £695

Prices and products are subject to availability at the time of booking.

The deposit for these arrangements is £300 per person. Balance is due 12 weeks before departure.

This tour itinerary is also available as a Private Tour. Please ask for more details.

This is a land only tour with no flights included. However, flights from your regional UK airport, can be arranged in advance.

Japan: Discover Japan by Rail

price from **£2,595**

[Make an enquiry >](#)

WHAT'S INCLUDED:

- ✓ Accommodation
- ✓ English speaking guides
- ✓ Transfers
- ✓ Bullet trains
- ✓ Baggage transfers for one piece
- ✓ Meals as specified
- ✗ International flights
- ✗ Airport taxes
- ✗ Local tips
- ✗ Personal spending
- ✗ Travel insurance

When making an enquiry or reservation we will request your contact details, however no payment will be required at this stage. We will contact you for payment details and to confirm your booking, your details and the details of those travelling with you along with any extras you'd like to add.

TOUR MAP



Extend your holiday with a stopover



STOPOVERS • BEACH

Dubai Stopover

4 DAY TOUR FROM £350

Dubai, the ultimate stopover destination for shopping and relation

[VIEW THIS PACKAGE](#)

We're here to listen to your needs so if you need to chat, then why not email us or pick up the phone, *we will be happy to help.*

EMAIL US

info@linkstravelandtours.co.uk

PHONE

020 8543 8133