

KENYA



The most exciting and adventurous Safari

VISITING ALL MAJOR PARKS / GAME DRIVES
08 NIGHTS 09 DAYS

DAY 01

Group meet at the Katunayake International Airport for departure to Nairobi. Arrival into Nairobi, clear airport formalities and check in at hotel. Dinner and overnight stay at hotel.

DAY 02

Nairobi / Amboseli

After breakfast leave for Amboseli National Park, which is situated right at the footsteps of Mount Kilimanjaro the highest Mountain in Africa yet covered with snow. Lunch, and experience the majestic view of Kilimanjaro with afternoon game drives. Dinner and overnight stay will be at a Lodge or camp.



Amboseli National Park

Amboseli lies immediately North West of Mt. Kilimanjaro, on the border with Tanzania. Amboseli was established as a reserve in 1968 and gazetted as a National Park in 1974. The Park covers 392 km², and forms part of the much larger 3,000 Km² Amboseli ecosystem. Large concentrations of wildlife occur here in the dry season, making Amboseli a popular tourist destination. It is surrounded by 6 communally owned group ranches.

The National Park embodies 5 main wildlife habitats (open plains, acacia woodland, rocky thorn bush country, swamps and marshland) and covers part of a Pleistocene lake basin, now dry. Within this basin is a temporary lake, Lake Amboseli, that floods during years of heavy rainfall. Amboseli is famous for its big game and its great scenic beauty - the landscape is dominated by MT Kilimanjaro.

DAY 03

Amboseli / Treetops

After breakfast drive to Treetops Lodge passing through Nairobi and thereafter driving through the agricultural lands of central Kenya to arrive in time for lunch.

KINDLY PACK A SMALL SOFT BAG FOR OVERNIGHT THIS DAY.

After lunch spend the rest of the day at the balconies for watching wild animals as they come to drink water and lick salt at a waterhole at the bottom of Tree Lodge. Dinner and overnight at lodge.



Tree tops

Treetops is famous as the place where the then-Princess Elizabeth learned of her father's death and ascended to the British Throne in 1952. Treetops lies in the path of an ancient elephant migratory route between the Aberdare Mountains and Mt Kenya National park, and is strategically sited right in front of a watering hole and salt lick. Guests can drink in the sight of elephants, buffalo, rhinos and more from the safety of four viewing decks and a rooftop



Superlink Travels (Pvt) Ltd,

70, 'Lucky Plaza', Kollupitiya Lane (St. Anthony's Mawatha), Colombo 3
Tel: 2573767, 2575900, 2575698 Hotline: 2577658 Fax: 2575832, Email: superlink@eureka.lk, superlink@slt.lk
Web site : www.superlinktravels.com



Superlink Travels

platform. Shutterbugs can take close shots from two photographic hides at ground level. History buffs can get animal counts for years past. Die-hard animal lovers needn't worry about missed sightings, even into the early hours of the morning. An optional buzzer in the rooms alerts the guests when a spectacle is unfolding at the waterhole. Game drives and a lecture about Treetops are also available to the guests. Guests are advised to bring warm clothing as nights can get chilly at this lodge, which is 6,450m above sea level.



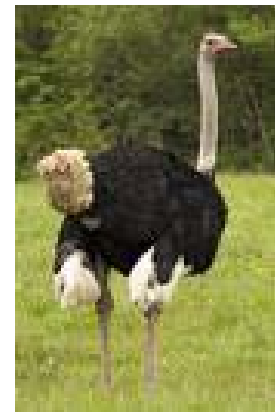
DAY 04

Tree tops / Samburu

After breakfast depart for **Samburu Game Reserve** passing through the equator to arrive in time for lunch. Afternoon unlimited game viewing in Samburu Game Reserve where you will have a chance of seeing the Gerenuk, Beisa Oryx, Reticulated Giraffe, Grevy's Zebra and the Somali Ostrich. Dinner and overnight at Lodge.

Samburu Game Reserve

Samburu Ecosystem The reserve is essentially lava plain that features steep sided gullies and rounded hills wherein the 32-kilometre Uaso Nyiro River provides both the central feature of the landscape and the lifeblood of the ecosystem. The vegetation comprises predominantly acacia woodland interspersed with bush, grass and scrubland, which is broken here and there by small rugged hills whilst the meandering loops of the river are bordered by a narrow gallery of riverine woodland in which acacia and doum palm flourish. This is a dry country ecosystem and is, therefore, prone to large variations in the animal populations as they move in search of water and pasture. And, whilst poaching has completely wiped out the rhino herds, lion are often seen while the burgeoning elephant herds are responsible for the ruination of several sections of riverside forests. The range of rare species also includes reticulated giraffe, Grevy's zebra, Somali ostrich and gerenuk whilst the bird life is diverse and prolific and includes marshal eagle, pygmy falcons, hornbills and Egyptian geese.



DAY 05

Samburu / Sweetwater's Camp

Breakfast and depart with a game drive en route out of the park for **Sweetwater's Game Sanctuary** to arrive in time for lunch. Afternoon unlimited game viewing in Sweetwater's Game Sanctuary where you will have a chance of standing beside a friendly Rhino called Max and take pictures. Dinner and overnight at Camp.

Sweetwaters Tented Camp

Sweetwaters Tented Camp lies in the heart of privately owned 24,000 acres of Oi Pejeta - Sweetwaters Conservancy, enjoying magnificent views across the game - studded plains to the snowcapped peaks of Mount Kenya. Sweetwater's Tented Camp is a two and a half hour drive from Nairobi. Alternatively, Nanyuki airstrip is a one-hour drive away. Overlooking a floodlit waterhole, the camp offers visitors an unforgettable opportunity to watch and photograph animals in their natural habitat.



Sweetwaters Chimpanzee Sanctuary

The chimp sanctuary is the only one of its kind in Kenya. Visitors can enjoy the unique opportunity of observing the chimps by boat on the Uwasu Nyiro River. The riverine forest and the savannah grassland of the sanctuary are home to 26-orphaned chimps. Here one has the opportunity to meet with Poco, who spent six years of his life imprisoned in a small birdcage suspended from a roof, a garage. Now Poco is a handsome, contented chimp, able to explore his habitat.



Superlink Travels (Pvt) Ltd,

70, 'Lucky Plaza', Kollupitiya Lane (St. Anthony's Mawatha), Colombo 3
Tel: 2573767, 2575900, 2575698 Hotline: 2577658 Fax: 2575832, Email: superlink@eureka.lk, superlink@slt.lk
Web site : www.superlinktravels.com



DAY 06

Sweetwater's Camp / Lake Nakuru

After breakfast, depart for Lake Nakuru Bird and Rhino Sanctuary, which are situated at the scenic floor of the Great Rift Valley crossing the Equator at a different point and stopping over at Thompson Falls to take pictures of the great waterfalls. After lunch unlimited game viewing and bird watching at Lake Nakuru Bird and Rhino Sanctuary where you will have a chance of seeing both Black and White Rhino, Leopard which is a shy animal and the migratory birds Flamingos. After the game drive depart to lodge for dinner and overnight stay.



Lake Nakuru National Park



Lake Nakuru National park is the most famous of the Great Rift Valley lakes and renowned for its magnificent bird life, especially the flamingos which seasonally flock there in there thousands. This 188sq. kms. Park is a paradise for those who are particularly interested in ornithology and also offers the opportunity of seeing White Rhino, the rare Rothschild's Giraffe, large herds of Buffalo and an abundance of various plains game. Sightings of Leopard resting in the branches of acacia trees are very common.

DAY 07

Lake Nakuru / Masai Mara

After an early breakfast, depart Lake Naivasha for Masai Mara Game Reserve proceeding through the picturesque floor of the Great Rift Valley. After lunch unlimited game viewing at Masai Mara Game Reserve where you will have a chance of seeing "the big five", different varieties of birds and one of the best Savannah vegetation in the world. Dinner and overnight lodge.

Masai Mara National Reserve (Declared The 7th Wonder of The World)

The Masai Mara National Reserve is probably the most famous and most visited Reserve in Kenya. It offers breathtaking views (as seen in the film "Out of Africa", much of which was filmed here), an extraordinary density of animals including "the Big Five" (lions, leopard, elephant, buffalo, rhinoceros) and may varieties of plains game.

An impressive feature is the annual migration of wildebeests, zebras and gazelles from the plains of the Serengeti that cross the Tanzanian border and rivers to reach the Mara's grasslands from late June, tracked by predators: lion, leopard, cheetah, and hyena, and circled by vultures as their journey unfolds. Their dramatic river crossings are a reality for tourists visiting in early July-August.

Apart from the seasonal migration, game viewing is excellent year round. Game includes elephant, black rhino, buffalo, plains zebra, hartebeest and big cats. The rivers are home to hippo and crocodiles. 452 species, 53 of which are raptors.



DAY 08

Depart Masai Mara

After an early breakfast, depart Masai Mara and return to Nairobi to arrive in time for lunch. After lunch transfer to the airport to connect to your return flight.

DAY 09

Arrive in Colombo.

TOUR ENDS



Superlink Travels (Pvt) Ltd,

70, 'Lucky Plaza', Kollupitiya Lane (St. Anthony's Mawatha), Colombo 3
Tel: 2573767, 2575900, 2575698 Hotline: 2577658 Fax: 2575832, Email: superlink@eureka.lk, superlink@slt.lk
Web site : www.superlinktravels.com

